

# VIDES

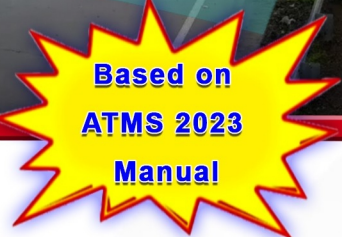
## Video Incident Detection and Enforcement System



Adhering to



Guidelines

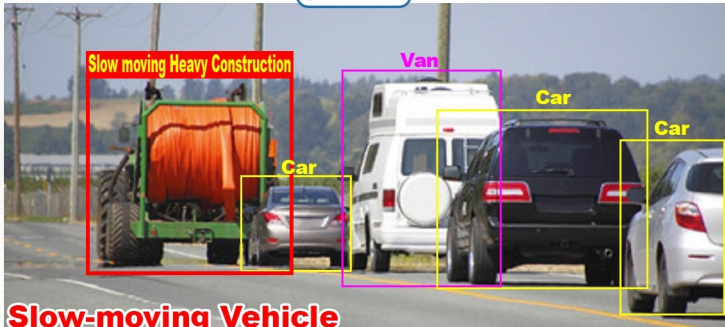


### VIDES Overview:

Video Incident Detection and Enforcement System is now mandatory for NHAI concession projects. This product offers a comprehensive solution, including both software and hardware, in accordance with the 2021 manual. The VIDS LPU kit and software also provide excellent integration with the prevailing ATMS system.

### How VIDES works?

A Video Incident Detection and Enforcement System combines a GPU kit with cameras to capture and analyze video data. The system processes the footage and identifies incidents, displaying them on operators' screens. Incidents are categorized and presented visually. When an incident is detected, the software raises an alarm and displays the incident image, enabling swift response and enhanced security measures.



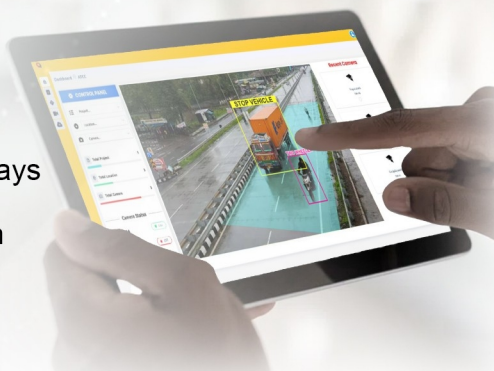
Slow-moving Vehicle



Stopped Vehicle & Poor Visibility

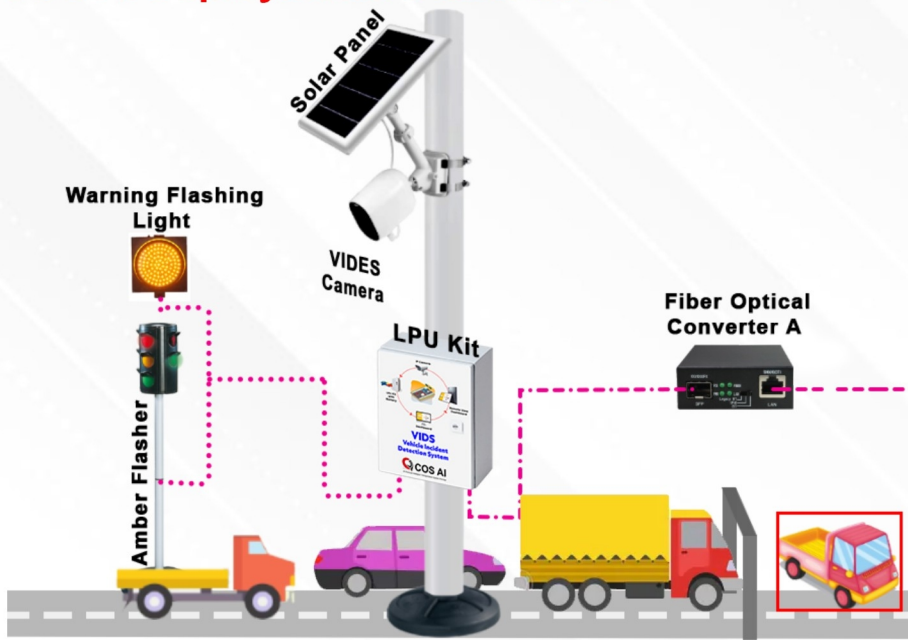
### Detected Incidents:

- ★ Vehicle Collisions
- ★ Vehicles Impacting Side Rails or Medians
- ★ Vehicles Emitting Smoke/Fire
- ★ Stalled or Stationary Vehicles
- ★ Fog/Debris/Fallen Objects Detection
- ★ Pedestrian Crossing Monitoring
- ★ Animals on the Carriage Way
- ★ Wrong Lane Driving/Heavy Vehicles in Fast Lane
- ★ Seatbelt Violation
- ★ No Helmet in Two-Wheelers
- ★ Triple Riding in Two-Wheelers
- ★ Banned Vehicles on Expressways
- ★ Opposite Side Traffic Detection
- ★ Over Speeding



# COS AI Deployment Architecture

## TOLL MANAGEMENT CENTRE

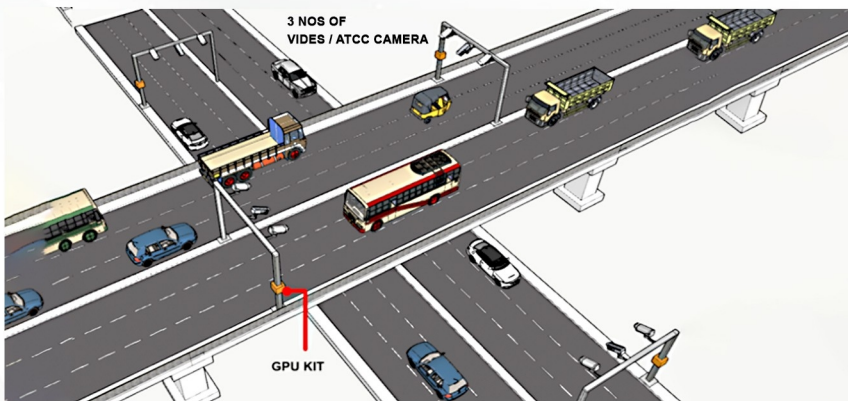


### VIDES scope of work COS AI focusing on mentioned topics:

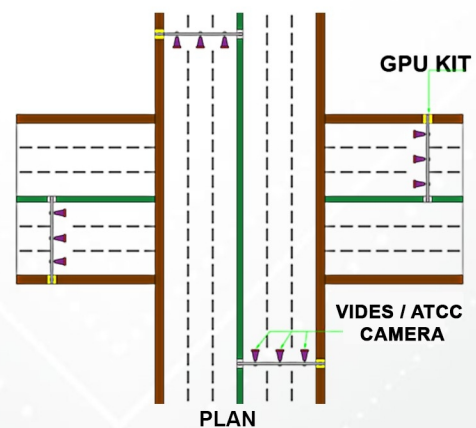
1. Accident and Incident Detection.
2. Automatic Traffic Counting & Classification (as per ATMS 6 classes).
3. Vision-Based Speed Detection.
4. ANPR - Automatic Number Plate Recognition.

### COS AI's Indicative VIDES Components

Sl.No	VIDES Components	Qty.	Unit	Remarks
1	COS AI VIDES Software	39	Nos	COS AI
2	Hardware of COS AI LPU Kit	39	Nos	COS AI
3	IP Camera 2MP / 5MP – HIKVISION (Overview, ANPR & Side view)	195	Nos	COS AI
4	PoE 8 Port Switch D Link	39	Nos	COS AI
5	L2 Switch	39	Nos	COS AI
6	To viewing the real time scenario - Desktop (Specs.: i7/ 16GB RAM / 2 TB SSD Hard Disk)	1	Nos	CLIENT



3D - VIEW  
VIDES & ATCC CAMERA @ FLYOVER/INTERCHANGE



PLAN  
VIDES & ATCC CAMERA @ FLYOVER/INTERCHANGE

### Terms & Conditions

1. The client is responsible for covering the costs associated with Uninterrupted Power Supply, lighting, Internet Broadband line, Network cabling and any other miscellaneous works.
2. Any expenses related to establishing connectivity from the camera pole/gantry to the toll center, including fiber connectivity, are the responsibility of the client.

**COS AI** – AI Powered Intelligent Transportation System Provider

Please visit other similar ATMS products:

- ATCC+ANPR - Premium product both ATCC & ANPR analytics done in single unit.
- We also provide customized AI-based services in ITS for our clients.

Please contact us or visit [www.cosai.in](http://www.cosai.in) for more information.



**Head Office :**

**COS AI** 6/13, Kamaraj Nagar 4th  
Street Tallakulam, Madurai-625002

**Branch Office :** Bangalore, Chennai

**Contact us**

+91 9443063037

coscmd@gmail.com

[www.cosai.in](http://www.cosai.in)

